



Publisher:
Solare Datensysteme GmbH
Fuhrmannstr. 9
72351 Geislingen-Binsdorf
Germany

International support
Tel.: +49 7428 9418 -640
Fax: +49 7428 9418 -280

e-mail: support@solar-log.com

Italy
Technical support: +39 0471 631032
e-mail: italy-support@solar-log.com

France
Technical support: +33 97 7909708
e-mail: france-support@solar-log.com

Switzerland
Technical support: +41 565 355346
e-mail: switzerland-fl-support@solar-log.com

Holland
Technical support: +31 85 888 1110
e-mail: benelux-support@solar-log.com

Belgium
Technical support: +32 553 03670
e-mail: benelux-support@solar-log.com

United States
Technical support: +1 203 702 7189
e-mail: usa-support@solar-log.com

Australia & New Zealand
Technical support: +61 1300 79 20 01
e-mail: australia@solar-log.com

1 Connecting Solar-Log 300 and 200 to a Laptop or PC

General procedure for connecting the Solar-Log 300 and/or 200 to a laptop or PC.

Note!



The manual refers to Windows 7 as the operating system.

After clicking on the Start button, the Control Panel as located in the left menu with older versions of Windows.

Windows 8: Open Control Panel by swiping in from the right edge of the screen, tapping Search (or if you're using a mouse, pointing to the upper-right corner of the screen, moving the mouse pointer down, and then clicking Search), entering Control Panel in the search box, and then tapping or clicking Control Panel.

1.1 Enable DHCP on your PC or laptop.

Proceed as follows:

- Click on Control Panel and then go to the Network and Sharing Center.
- Click on Local Area Connection to open the Status window and then click on Properties.
- Select the Internet Protocol Version 4 (TCP/IPv4) and then click on Properties.
- Select Obtain an IP address automatically and Obtain DNS server address automatically in the General tab (see illustration).

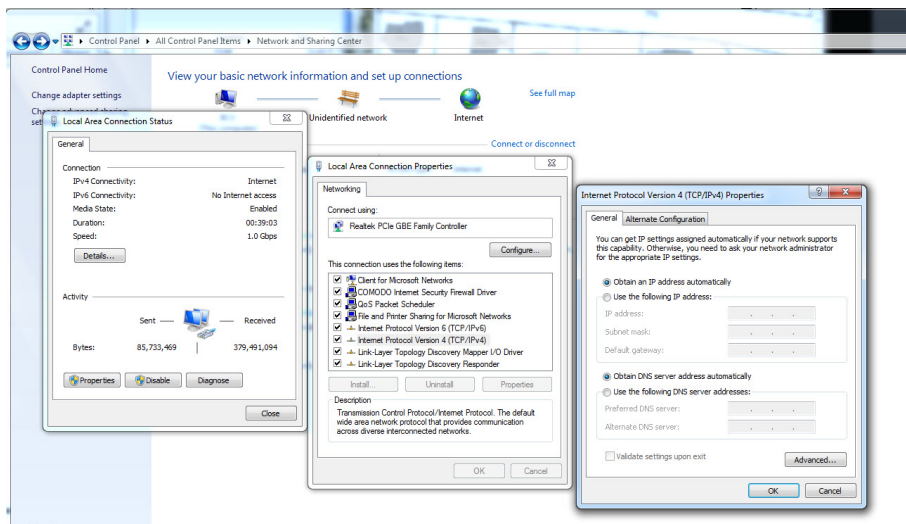


Fig.: Windows 7 settings for DHCP

- Connect the Solar-Log™ to the PC after than (via a patch cable) and turn on the Solar-Log™.

1.2 Determining the IP address

The IP address always starts with 169.254 and is followed by the last four digits of the serial number of the particular device (wx, yz), i.e 169.254.wx.yz. For example: SN 123456789 – last four digits "6789" = 169.254.67.89)

1.3 Enter the IP address in your internet browser and press enter

(See illustration).

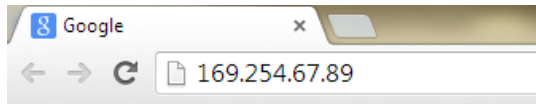


Fig.: The address bar from Google Chrome

The Welcome Screen of the Solar-Log™ is now displayed.

The actual configuration of the Solar-Log™ can now be started.

Solare Datensysteme GmbH
Fuhrmannstraße 9
72351 Geislingen-Binsdorf
Germany
Tel: +49 7428 9418 200
Fax: +49 7428 9418 280
info@solar-log.com
www.solar-log.com
www.solarlog-WEB.com
Hotline: +49 7428 9418 660

The copyright of these instructions remains with the manufacturer. No part of these instructions may be reproduced in any form or processed, duplicated or distributed using electronic systems without the written consent of Solare Datensysteme GmbH. Subject to change without notice.
Non-compliance resulting in contradiction of the above-mentioned specifications shall result in obligation to provide compensation for damages. All brands and trademarks contained in this manual are the sole property of the respective manufacturer, which we respect and recognize herewith.